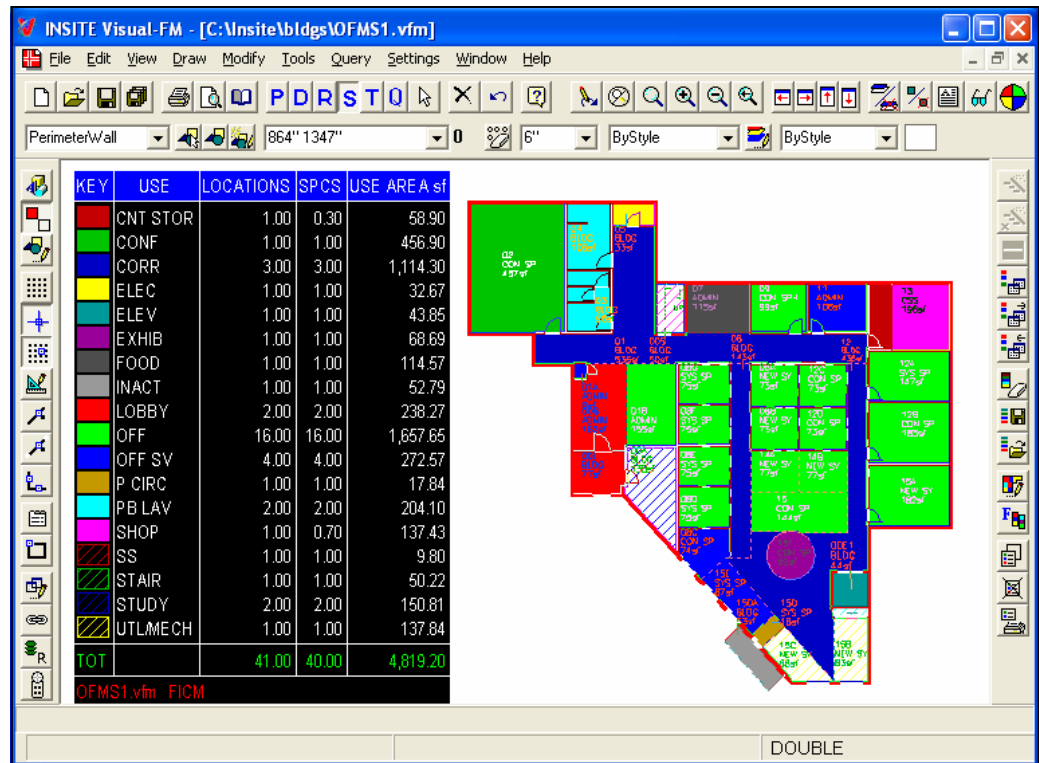


**INSITE is a pioneer in the field of Space and Asset Management.**

For more than 40 years, INSITE Space Management and Asset Management solutions have been used by some of the most prestigious institutions around the world to manage, plan and report on space and assets. Whether your institution is large or small, INSITE has a solution to meet your needs.

With INSITE, quickly find, access, and analyze data using one uniform interface. Groups are no longer interdependent upon one another for reports and analysis. And, best of all, results are almost instantaneous. Your data appears as lists or easy to understand graphic floor plans on your PC within seconds.



## Benefits

- Improves productivity by eliminating the need to polyline spaces.
- Speed the creation of drawings with built-in symbol libraries.
- Increases accuracy of information via drawing and database updates.
- Provides both FICM and BOMA area measurements simultaneously.
- Submit queries to cross-reference, verify, and analyze data graphically.
- Helps to visually report on critical space and asset data.
- Output drawings in popular AutoCAD® .dwg and web .html formats.

INSITE Visual-FM is a comprehensive software application for managing the physical spaces and assets within buildings and other structures. INSITE provides an institution wide view of managed space and provides a central depository for space inventory to track all attributes, including occupants, within your facilities. INSITE provides you the means to effectively manage the use of space by maintaining an accurate inventory of space and assigning that space within your institution by individual room numbers, occupying organizations, architectural room uses, configurations and areas. A host of additional space related data can be tracked. The entire database is organized in a hierarchy, from spaces to floors to buildings to sites to regions. Visual-FM also provides the ability to support space planning scenarios for space and occupant allocation studies.

## Benefits

Some of Visual-FM capabilities and benefits include:

- International units of measure
- Both BOMA and FICM area measurements
- Track non-building entities
- Track gross, assignable and non-assignable areas
- Track use, organization, and people within each space
- Manage assignment by organization or functional use
- Accommodate multiple organizations and uses
- Allocate space by percentage of use
- Track equipment assigned to spaces

## Standard Features

Visual-FM includes many standard features:

- Configurable menus for individual users
- User ad-hoc query and reporting
- Flexible application preference fields
- Define area boundaries interactively according to BOMA or FICM standards
- Identify each space with a “space label” that is unique and contains space data about each space
- Add/change/delete space layouts using standard commands
- Space data and area calculations are updated from the Visual-FM drawings to the INSITE database
- Intelligently retrieve database information about spaces from the Visual-FM floor plan
- Automatically check for missing “space labels”
- Hatch or color spaces on the floor plan based on selected data criteria
- Graphically display multiple organization and use of spaces
- Selection and identification of spaces based on complex query
- Visual-FM output to AutoCAD DWF (Design Web Format) for web presentation of graphical reports that includes:
  - Automatic annotation of each space based on information in the drawing
  - Hot spots on each space to view more space data
- Link graphic files to the database without embedding data in the drawings
- Make changes to the database from within the drawing environment
- Link organization, use, and space data to the drawing
- Reconcile the calculated areas in drawings to the areas in the database

- Verify that all drawing data corresponds with the database data
- Generate colored and hatched thematic plans based on user-defined queries
- Access to drawings for review, markup and printing

## Space Allocation, Planning, and Management

Visual-FM provides complete management of space use including:

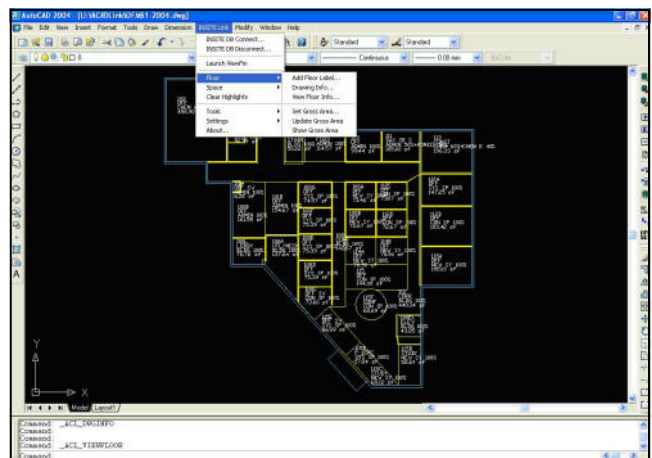
- Assign space to multiple organizations within multiple locations
- Designate space for research (and cost recovery or charge back)
- Assign use and multiple uses of space
- Search for vacant space
- Track lease and ownership status
- Make consolidation and expansion decisions
- Analyze availability of space to minimize facility costs

## Link to Database

The INSITE space and asset database can be linked to the floor plan applications Visual-FM and View-FM™ to:

- Create alternative move scenarios
- Link occupant, space, and equipment data to the database without embedding data into the drawings
- Update the database from within the drawing
- Update embedded drawing data from within the database
- Audit and reconcile calculated areas in drawings to the areas in the database

The INSITE ACADLink™ also links to the INSITE space database.



## Floor Plan Queries

INSITE has developed a unique link between INSITE's Visual-FM and View-FM applications and the INSITE database. Powerful query capabilities allow users to find the information they need in a quick and meaningful way. Features include:

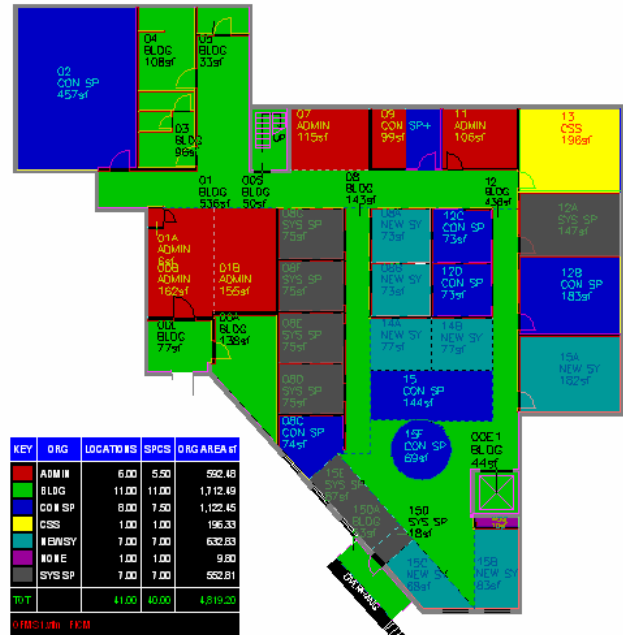
- Access to multiple database tables
- Queries based on complex criteria
- User-defined preparation of graphical presentation including colors, hatching, and text
- Graphic reports on the location of all spaces occupied by organization, use, and other space and occupancy data
- Customizable report legends

## Visual Space Planning

INSITE's View-FM floor plan application is designed specifically for non-CAD users who need access to information and do not have authority to change drawings. View-FM is a view only application that allows user to query drawings, and the database, for the information they need as well as to "redline" drawings for planning purposes. This feature allows users to create "what-if" scenarios with drawings without changing the drawing of record. Occupants, spaces, and organizations can be rearranged for a proposal or presentation.



View-FM Floor Plan Scenario



Visual-FM Floor Plan Query Report

Please contact us for more information.



### US Headquarters

INSITE  
200 Corporate Place  
Peabody, MA 01960  
USA  
ph: 978-536-0129

### UK Office

INSITE  
293 Apperley Road  
Apperley Bridge, Bradford  
BD10 0PX, UK  
ph: +44-127-461-4421

email: [sales@insite.org](mailto:sales@insite.org)

url: [www.insite.org](http://www.insite.org)